

STAN TUG 1907 ICE



➤ BUILT UNDER LICENSE FROM A DESIGN AND ENGINEERING PACKAGE SUPPLIED BY DTC | PICTURE OF SIMILAR VESSEL

GENERAL

Basic functions	Towing, mooring, harbor-assist and Ø fire fighting operations
Classification	BV (or ABS)
Notation	I * HULL * MACH Tug Coastal Area ICE 1C
Flag	USCG CFR46 subchapter M
US Tonnage	<100 GRT
Paint system	Epoxy based

DIMENSIONS

Length overall	19.54 m
Beam overall	7.74 m
Depth moulded	3.39 m
Draught	2.95 m
Displacement (100% tanks)	195 t

TANK CAPACITIES

Fuel oil (service)	21.2 m ³
Fresh water (service)	3.1 m ³
Sewage	1.7 m ³
Dirty oil	1.0 m ³
Lubrication oil	1.1 m ³
Bilge water	1.3 m ³
Ø Foam	4.2 m ³

PERFORMANCES

Bollard pull max	29.5 T(metric)
Speed	11.2 kn

PROPULSION SYSTEM

Main engines	2x Caterpillar C32 TTA(or equivalent)
Total power	1790kW (2,400 bhp) at 1800 rpm
Gearboxes	2x Reintjes WAF 562L red. 5.947:1
Diameter	Ø 1,800 mm (72")
Rudders	2x Streamlined, double plate
Steering gear	Powered hydraulic, 2x 45°

AUXILIARY EQUIPMENT

Generator sets
 Bilge/fire/GS pump
 Fuel oil system
 Cooling system
 Fresh water heater
 ER ventilation
 External fire fighting

2x John Deere, 480 V, 65 kW, 60 Hz
 Elec. driven 27,2 m³/hr at 18.2 m.w.g.
 Duplex filters, water separators + remote emergency stopping
 Closed fresh water cooling system via the outside bottom frames and an expansion tank
 480 V, 80 liter capacity
 2x fan with total capacity of 15.000 m³/hr
 Diesel driven set 300m³/hr @ 10bar, 1 monitor

DECK LAY-OUT

Anchors
 Capstan
 Towing hook
 Rubber fenders
 Life raft
 Ø Towing winch aft

1x 120 kg Pool (High Holding Power)
 Electric, 3 ton @ 15 m/min
 1x disk type SWL 450kN, Mampaey
 Block fender at the bow and single D-fender around the hull
 One for 6 persons
 Hydraulic, 5T @ 23m/min, low speed 10T @ 10m/min, brake 60T, wire capacity 300m single drum
 800kg @ 10.3m (harbor condition)

ACCOMMODATION

Suitable for a crew of 4. Wheelhouse with acoustical ceiling and floating floors. The wheelhouse is arranged with helmsman seat and settee with table. Below deck a galley with floating floor is arranged with a sink, cooker and refrigerator. Furthermore, a sanitary space and a large changing room with four bunks is arranged below deck. Wheelhouse is air-conditioned by means of a split unit.

SECONDARY SHIP SYSTEMS

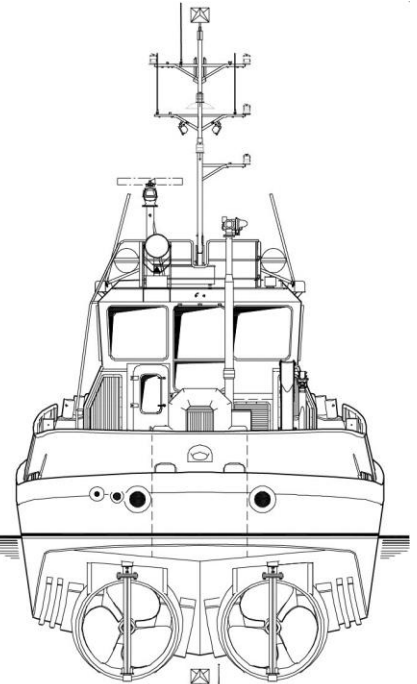
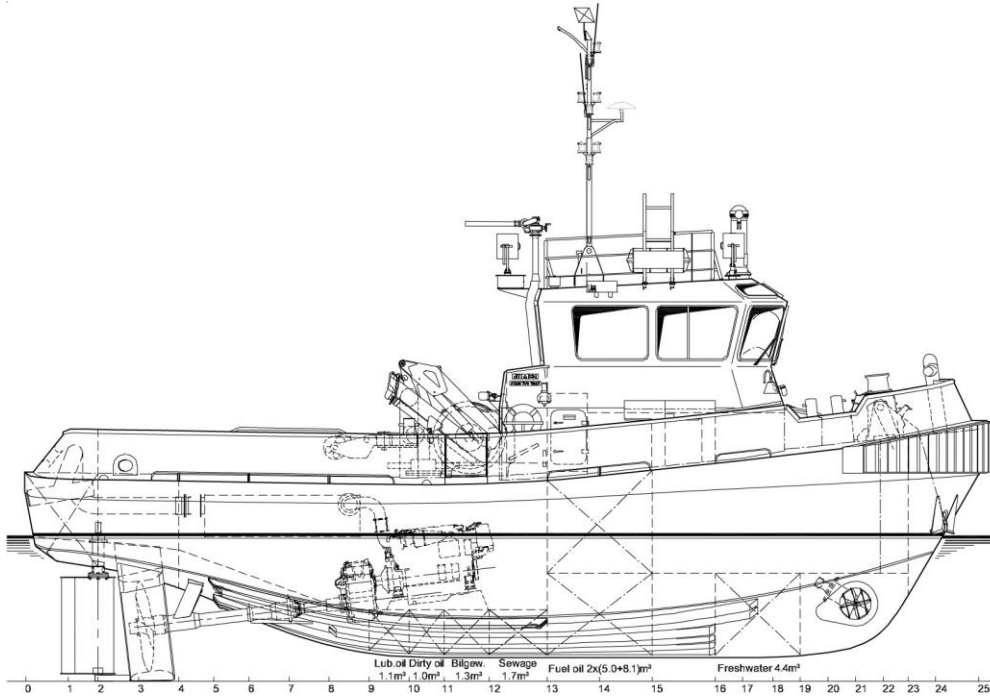
Fixed fire fighting ER Novec 1230 system

NAUTICAL AND COMMUNICATION EQUIPMENT

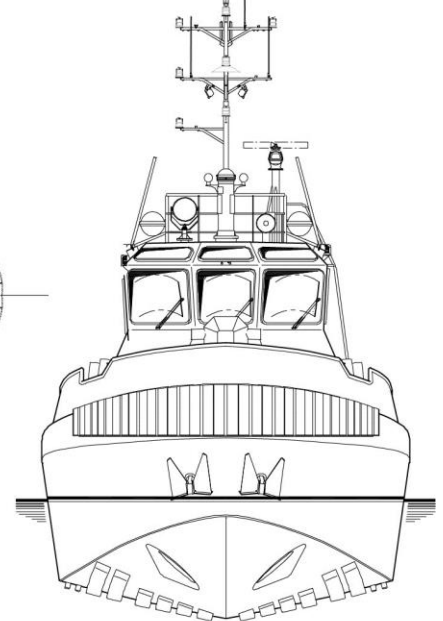
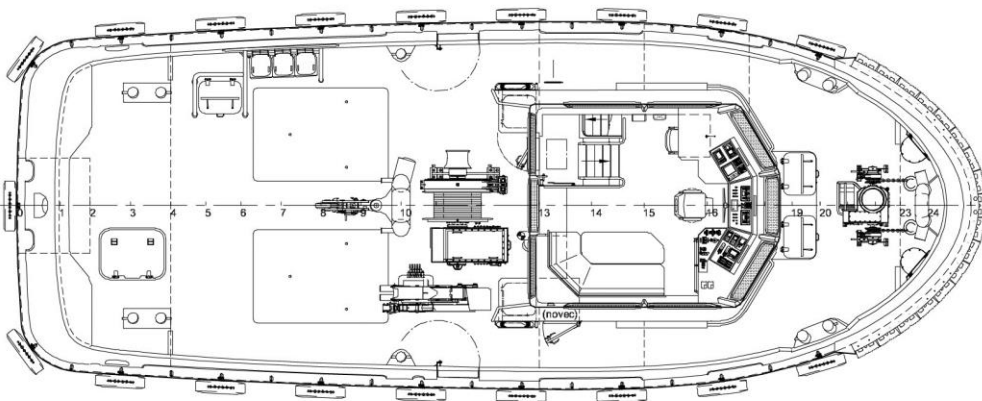
Radar JRC JMA-5212-4 Mk2, 4' scanner
 GPS/Glonass navigator Samsung SGN-500
 Search light 1x 500W
 Echosounder Furuno FE-800
 VHF radio telephone 2x Thrane & Thrane Sailor 6222, 25 W
 Navtex Furuno NX-700A
 AIS Samsung SI-30AR
 EPIRB Jotron Tron-60S
 SART Jotron Tronsart 20

Ø = Optional equipment

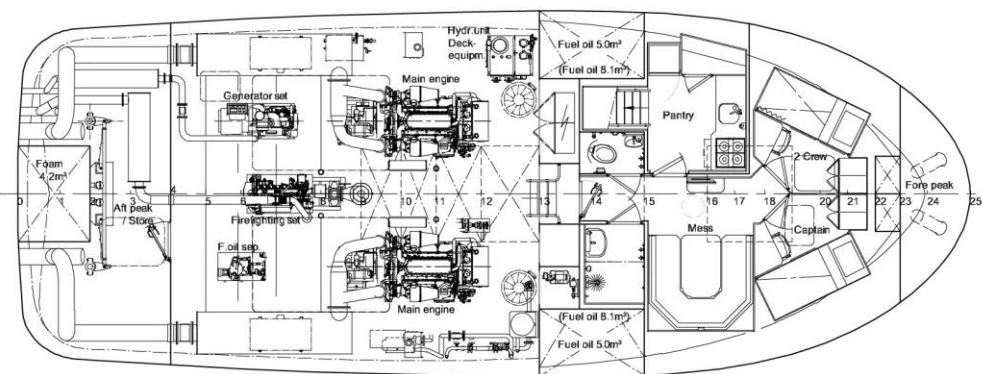
STAN TUG 1907 ICE



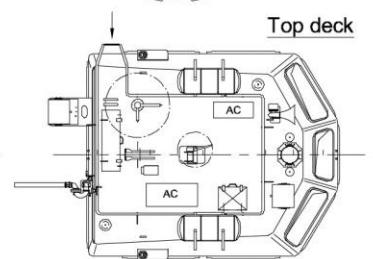
Main deck



Below Main deck



Top deck



Damen.com

©This product sheet is designed to inform about Damen and its product(s). All data presented is preliminary and subject to changes. No rights can be derived from this information with regard to dimensions, characteristics or performances of any of the products shown. Damen is not liable for the consequence of taking on the information from the product sheet. The entire contents of this product sheet (text, drawings, photos, etc.) is copyrighted and may not be reproduced or distributed without the specific written permission of Damen.